

United Way of Perry County

Annual Report: 2010

GIVE. ADVOCATE. VOLUNTEER. LIVE UNITED



- Gayle Strassell, former Tell City Mayor, served as the chairman of the 2010 Campaign which has netted \$99,850 to date...79% of the goal of \$125,000.
- Many thanks to German American Bank for hosting our 2010 annual meeting and 2009 Campaign Celebration in March 2010!
- And many thanks to Fifth Third Bank for hosting the 2010 Campaign Celebration in March 2011!

MANY THANKS TO OUR DONORS!!!

Ultra Platinum Leaders \$5,000- \$10,000

Waupaca Foundry—Corporate
 Perry Central School Corp. Employees
 Perry County Memorial Hospital Emp.

Platinum Leaders \$3,500-\$4,999

Old National Bank—Corp. and Emp.
 Schwab/Sentry Safe—Corp. and Emp.
 Best Chairs—Corporate and Employees
 Southern Indiana Power—Corp. and Emp.

Gold Leaders \$2,000-\$3,499

Perry County Employees
 Tell City-Troy Township Employees
 German American—Corporate and Emp.
 Mulzer Crushed Stone—Corp. and Emp.
 Fifth Third Bank—Corp. and Employees

Silver Leaders \$1,000—\$1,999

Webb Wheel

G & T Industries

C & S—Corporate

Tell City Electric Employees

Cannelton School Corporation Emp.

Consolidated Recycling—Corporate

St. Meinrad —Corp. and Employees

Visiting Nurse Association Employees

State Employees Community Campaign

Bronze Leaders \$500—\$999

City of Tell City Employees

Community Partners Up to \$499

SIRS

Perry County News

Golden Living Center

Cannelton City Employees

Parker Hannifin—Corporate and Emp.

Wal-Mart—Corporate and Employees

Oakwood Health Campus Emp.

Leadership Givers

Platinum \$ 3,500 — \$ 4,999

Mrs. Roberta Mulzer

Gold \$ 2,000 — \$ 3,499

Tom and Susan Kramer

Silver \$ 1,000— \$ 1,999

Naomi Mulzer

Franklin 24, Inc.

Tom and Debbie McCart
 Charlie and Cindy Ehrlich
 Brent and Mary K. Cardinal

Bronze: \$ 500 — \$ 999

Gary Braun

Jan and Beth Stein

Ruth Anne Werner

David and Judy Colby

Bill and Betsy Bradley

James and Cynthia Tyler

Mark and Rebecca Fenn

David and Evelyn Adams

Joan Esarey, PCMH

Kathy Clayton, PCMH

Earla Williams, PCMH

Randal Dennison, PCMH

Joe and Theresa Stuber, PCMH

Jon Hartz, Old National Bank

Rita Mahoney, Old National Bank

Justin Martin, Lutgring Brothers

Missy Noble, Fifth Third Bank

Regina Parker, Fifth Third Bank

Laura Noble, Tell City Schools

Leanne LeClere, Tell City Schools

Eric Miller, Mulzer Crushed Stone

Tara Bishop, Perry Central Schools

Brett Sanders, Perry Central Schools

.Michael Elaman, Elaman Accounting

Carla Fuller, Visiting Nurse Association

Paul and Kathy Wise, G & T Industries

William Patmore, Tell City Electric Dept

Roger Gehlhausen, Industrial Contractors

Kathy Pyle, Branchville Correctional Facility

Advocate: Senior Farmer's Market Nutrition Program

Last summer, UWPC became the local advocate for the Indiana Department of Health's Senior Farmer's Market Nutrition Program. This program provided \$24 worth of checks from the Indiana Department of Health to low income senior citizens to promote healthy food purchases from local farmers. It was a win-win situation for everyone...helping our senior citizens eat healthier and our local farm economy all at the same time.

Mayor Barbara Ewing and the City of Tell City is partnering with the UWPC to make this program available by providing



Local residents purchase fresh vegetables from one of the SMNP participants at the Tell City Farmer's Market last summer.

the required "market master" position. Janet Damin of the Tell City Water Department is our "go-to" market master for this program. She can sign farmers up to participate in the program and answer questions about the market. The UWPC is responsible for issuing the checks to the participants and we were blessed with a volunteer, Carla Thomas, who entered all the data for the program into the Indiana Department of Health database.

Perry County Power of Youth: Youth in Action

The Perry County Power of Youth Council, in its second year, is a new collaboration between the United Way of Perry County and the Perry County Community Foundation in partnership with Purdue Extension-Perry County.

This program teaches high school sophomores, juniors and seniors how to be philanthropists by giving their time, talent and treasure back to their community. The group organized the Youth Day of Caring and worked to raise funds through personal solicitation and by hosting a 3 on 3 Basketball Tournament. Last year they granted \$3,133.05 to Crisis



"Teaching youth to be changemakers in their communities"

Connection and Junior Achievement. They will make a grant of \$4,500 this year to an organization that focuses on youth recreational activities.

Our 2010-11 Power of Youth members from each high school are:

Cannelton — Jessalyn Sommer, Gary Biever, Tabatha Little, & Ian Jarboe; Perry Central — Kyle Troesch, Will Birkhead, Kristi Brumfield, Sara Brown, Deidra Dickerson, Nick Devillez, Kendall Hauser & Katie Schwartz; Tell City — Ariel Etienne, Klyne Waninger, Greg Clayton, Chelsey Skeen, Loren Braunecker, Elizabeth Bishop, Hannah Schaefer, Darian Oliva, Lacey Briggs, & Haley Ward.

Grantmaking: Investing in Our Community - \$71,386



Thanks to the generosity of our donors, \$71,386 were re-invested in our community through grants and designations to 17 different organizations in 2010!

Our 2010 Community Partners were: Agape Fellowship "By His Hands" hot meal program, American Red Cross, Anderson Woods, Big Brothers/Big Sisters, Buffalo Trace Boy Scouts, Catholic Charities Emergency Assistance and Shelter programs, Crisis Connection, Girl

Scouts of Southwestern Indiana, Perry County Memorial Hospital Companion Care and Home Health programs, Martin's Cloak Food Pantry, Perry County Council on Aging, Perry County 4-H, Perry County Even Start, Perry Central Family Outreach, Salvation Army, Visiting Nurse Association, and Widow's Barrel Food Pantry.

Many thanks so all our donors

Good Works: United Way of Crawford County

In 2008, UWPC expanded to Crawford County, Indiana and since that time our local Advisory Council has done great things for their county.

Last fall, they awarded six grants totaling to \$5,600 to Crawford County Library, Crawford County Extension Project LEAD, Crawford County 4-H, Crawford County Youth Services Bureau, Cedar Street Food

Pantry, and Crawford County Solid Waste District Recycling Day.

Most recently they have become a host site for Purdue Extension's Benefit Bank program. They will man computers equipped with the internet to help residents sign up for benefits that are available to them such as food-stamps and voter registration. The Benefit Bank will be

located in the Family House, a property located on the grounds of Crawford County's Youth Services Bureau.

YSB was the recipient of 14 refurbished computers through the Net Literacy program out of Indianapolis. The donation was made possible by the United Way of Crawford County.

UWCC Advisory Council members are: Mary Talmadge,



UWCC volunteers delivering refurbished computers to YSB

Sharon Lawson, Trudy and Ken Stephens, Sherrie Bell and Judy Bowman.

Dolly Parton Imagination Library: 402 Children enrolled

The United Way of Perry County became the local "champion" of the Dolly Parton Imagination Library in 2009. Within the first 9 months, we had reached our goal of enrolling 350 children and currently stand at 402 enrollees. We are very fortunate to partner with the Perry County Junior Women who help promote and raise funds for the program.

The Dolly Parton Imagination Library



Pat Glenn reads a DPIL book to grandson Kelby.

provides free, age appropriate books to all children in the county under the age of 5. Local businesses and organizations may become monthly sponsors for a donation of \$500.

Many thanks to our local Head Start teachers who helped us get children enrolled in the program, to the William Tell Family Outreach coordinator, Wendi Rich, and Power of Youth member, Ariel Etienne, for their assistance is preparing our brochures, and to PCMH the Perry County Library for distributing the brochures.



Dollars and Cents: The Balance Sheet as of December 31, 2010

ASSETS

Current Assets

4Community2 Collaboration	\$ 37,176.62
Disbursement Account	\$ 1,626.64
Dolly Parton Library	\$ 15,702.56
UW Crawford County	\$ 20,250.51
PC Greenway Initiative *	\$ 5,490.94
Campaign Accounts	\$ 177,523.91
Special Programs Account	\$ 1,380.12
Strategic Initiative Accounts	\$ 22,929.95
Reserve CD	<u>\$ 26,204.33</u>

TOTAL ASSETS **\$ 308,285.18**

*UWPC serves as fiscal agent for PC Greenway Initiative

LIABILITIES & EQUITY

Liabilities

Current Payroll Liabilities	<u>\$ 369.38</u>
Total Liabilities	\$ 369.38

Equity

Opening Balance Equity	\$ 88,170.41
Retained Earnings	\$ 259,793.29
Net Income	<u>\$ -40,047.90</u>
Total Equity	\$ 307,915.80

TOTAL LIABILITIES & EQUITY **\$ 308,285.18**

Volunteering: The best work of life

- Our Volunteer of the Year for 2011 is Larry Peter, owner of PowerPlant. Larry is a native of Perry County having grown up in Tell City. Larry returned with his family to Tell City after Hurricane Katrina hit his home in New Orleans. He relocated his business here and has worked tirelessly to promote and support our community. He serves on the Perry County Development Commission's Quality of Life committee and recently produced a beautiful video entitled "The Art of Living" about our wonderful way of life here in Perry County. Larry also served on the UWPC Board of Trustees as its Vice President. He truly **LIVES UNITED!**
- Over 200 volunteers assisted us with Holiday Helpers United, Youth Day of Caring, Perry County Food Coalition, Senior Farmer's Market Nutrition Program, Perry County Power of Youth, Dolly Parton Imagination Library, and the Stuff the Bus programs.
- RSVP volunteers also assisted us once again in preparing our annual bulk mailing.



GIVE. ADVOCATE. VOLUNTEER.

LIVE UNITED

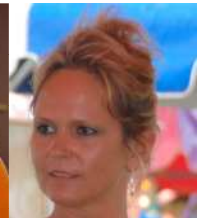


Board members represented the United Way of Perry County by manning booths at the Kids First Festival locations at Cannelton, Perry Central, and William Tell Elementary Schools, the Perry Central Health Fair, and volunteered their time for Holiday Helpers United, Days of Caring, the Power of Youth program, the Dolly Parton Imagination Library, and the Stuff the Bus programs.



2010 Board of Trustees: Heros in our Community

- Dan Conway, Best Chairs, Board President
- Larry Peter, Board Vice Pres.
- Patrick Rich, State Farm Insurance, Board Treasurer
- Gary Stath, So. Hills Counseling, Board Secretary
- Mary Aders, retired, GE
- Polly Story, Oakwood Health Campus
- Pam Krygielka, German American
- Earla Williams, Perry County Memorial Hospital
- Pat Crawford, retired, Crawford Family Memorial
- Lynn Fulkerson, Maurice's
- Sandy Henrickson, Southern Indiana Realty
- Kimberly Lasher, Fifth Third Bank
- Mary Snyder, retired, former Cannelton Clerk-Treasurer
- Melissa James, D-S-P Exceptional Children's Co-Op



The Mission Statement of the United Way of Perry County

To improve the quality of life for the people we serve by providing leadership and mobilizing resources to create lasting change.

United Way of Perry County
 1012—31st Street/P.O. Box 73, Tell City, IN 47586
 T: 812.547.2577; F: 812.547.2112
 E-mail: unitedwayperry@gmail.com
 Website: www.unitedwayperryco.org
 Rebecca Fenn, Executive Director